



Connecting to the Internet With a Ethernet DSL modem – Windows NT

Please follow the installation steps that came with your modem. See the document: [Ethernet DSL Modem Hardware Installation](#).

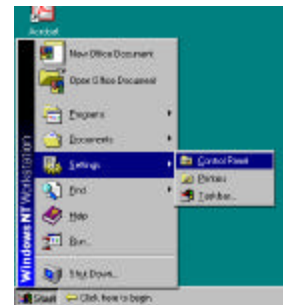
Your modem is pre-configured with the correct user name and password. You do not need to perform any additional changes.

NOTE: Once you have plugged everything in please make sure that the lights on the front of the modem labeled “Power”, “ADSL” and “PC” are solid. The lights should be on and not blinking.

Next, you must verify the settings of your Ethernet card. Follow the steps below. Note that the example is for Windows NT. The steps may be slightly different for your operating system.

1. Open Control Panels

Click the **Start** menu. Select **Settings**, then **Control Panels**.



2. Launch Network Control Panel

Double-click the icon labeled **Network**.



3. Protocols

Make sure that you have the **Protocols** tab selected.

Select the TCP/IP protocol.

Once selected, click the **Properties** button.



4. IP Address Tab

Select the **IP Address** tab.

Select your Ethernet Card from the **Adapter** drop down menu.

Make sure that the radio button labeled **Obtain an IP address automatically** is selected.



6. DNS Configuration Tab

Select the **DNS** tab.

Make sure that there is no **Host Name** or **Domain** listed in the small text boxes. Also make sure that there are no DNS numbers listed in the **DNS Service Search Order** and/or **Domain Suffix Search Order** text boxes.



6. Launch Browser

You can check whether your Internet connection is working by launching Internet Explorer or Netscape Navigator. Type in <http://www.pathcom.com> in the address bar and see if the website loads. If not, please contact technical support at (416) 214-6363.