



# Connecting to the Internet With a Ethernet DSL modem – Windows XP

Please follow the installation steps that came with your modem. See the document: [Ethernet DSL Modem Hardware Installation](#).

Your modem is pre-configured with the correct user name and password. You do not need to perform any additional changes.

**NOTE:** Once you have plugged everything in please make sure that the lights on the front of the modem labeled “Power”, “ADSL” and “PC” are solid. The lights should be on and not blinking.

Next, you must verify the settings of your Ethernet card. Follow the steps below. Note that the example is for Windows XP. The steps may be slightly different for your operating system.

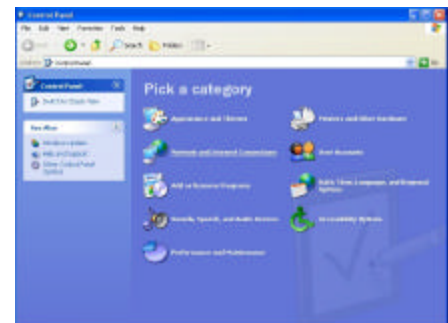
## 1. Open Control Panels

Click the **Start** menu. Select **Control Panels**.

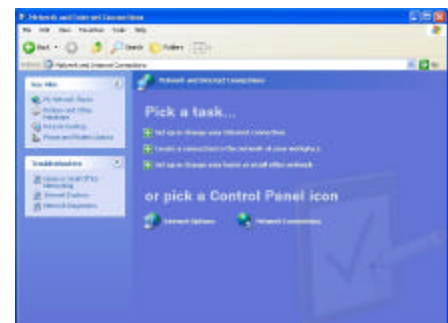


## 2. Launch Network Control Panel

Click on the icon labeled **Network and Internet Connections**.

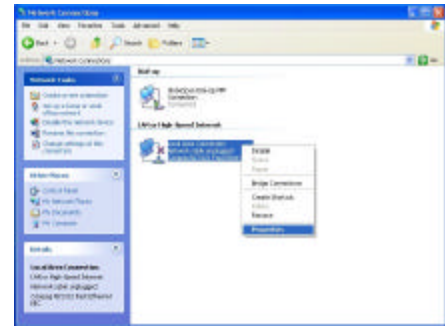


Click on the icon labeled **Network Connections**.



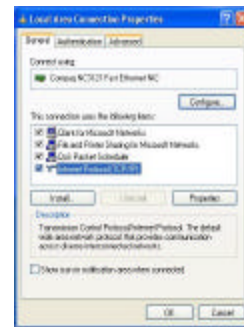
### 3. Select Local Area Connection

Click once with the right mouse button on the **Local Area Connection** icon and then click on **Properties**.



### 4. TCP/IP Settings

Select **Internet Protocol [TCP/IP]** and click **Properties**.



### 4. General Tab

Make sure that the radio button labeled **Obtain an IP address automatically** and **Obtain DNS server address automatically** are selected.



### 6. Launch Browser

You can check whether your Internet connection is working by launching Internet Explorer or Netscape Navigator. Type in <http://www.pathcom.com> in the address bar and see if the website loads. If not, please contact technical support at (416) 214-6363.